



FCS Pre-K-4 News

From the Principal

Welcome back to school! I am so excited to have your children back in the building! The building comes alive when our students are hear.

Our goal is to make sure we are addressing every students academic, social, and physical needs throughout the day. We want our school to be a place that students are excited to attend. These tasks can only be accomplished with your help. We need and want frequent communication so we know how your children in school. Please do not hesitate to contact teachers or myself at any time.

Here's to a great start of the school year!

Dr. Butler

Important Dates

- ⇒ September 14-18- i-Ready assessment period
- ⇒ September 21- School picture day
- ⇒ September 25 & 26- Homecoming Weekend

Fillmore Central
School

Issue 11

September 8, 2015



Inside this issue:

From the Principal	1
Important Dates	1
i-Ready	2
Breakfast	2
Important Reminders	4



Dear Parents,

Our school will soon be implementing a program called *i-Ready® Diagnostic* that will provide our students with an innovative diagnostic assessment. *i-Ready Diagnostic* helps teachers to effectively assess their students and then provide individualized instruction based on each student's unique needs. *i-Ready Diagnostic* assesses the following skill areas:

Reading

- Phonological Awareness
- Phonics
- High-Frequency Words
- Vocabulary
- Comprehension

Math

- Number and Operations
- Algebra and Algebraic Thinking
- Measurement and Data
- Geometry

i-Ready Diagnostic begins by giving students an adaptive assessment in reading or math. An adaptive assessment is a test that automatically adjusts the difficulty of the questions according to each student's performance in order to determine his or her abilities in reading or math. Before your child begins the assessment, it's important to set appropriate expectations. *i-Ready* is a very different kind of test that presents students with questions that can be both too easy and too hard. It is designed to do this until the assessment finds exactly the level at which the student is performing. Therefore, your child will certainly see some items above his or her level. Encourage your child to independently complete the test to the best of his or her ability, and know that it is okay to get questions wrong.

Each time a student gets an item incorrect, he or she will be presented with a simpler question until the diagnostic finds the grade level at which the student is performing. The assessment efficiently assesses students across multiple grade levels, allowing for identification of root causes of students' struggles or for identification of areas where a student is ready for further challenge. This information will then provide the teacher with a "road map" to instructional remediation.

Once your child completes the test, he or she will be assigned online instruction to support his or her progress in mastering each skill. *i-Ready Diagnostic* supports the teachers and administrators at your child's school. The program provides a series of comprehensive reports designed to make classroom instruction more effective. These reports include data about student performance as well as detailed teaching suggestions. They help educators make informed decisions about the instruction that is right for your child.

Should you have further questions, please do not hesitate to contact our office or your child's teacher. For more information on *i-Ready Diagnostic*, please visit the Curriculum Associates website at www.CurriculumAssociates.com.

READY, SET, BREAKFAST

Start your day the healthy way with a school breakfast!

To ensure families know what will be offered for breakfast we have developed a consistent breakfast menu that will be used for the 2015-16 school year.

Monday	Tuesday	Wednesday	Thursday	Friday
Pancake on a Stick	Breakfast Pizza	Breakfast Sandwich	Breakfast Burrito	French Toast Sticks

Students who receive a free or reduced lunch also can have a free or reduced breakfast!

Or

Students must have a minimum of 3 components and 1 must be a fruit or juice to be a complete breakfast.

Available Daily
Bread and cereal choices

Yogurt

Fresh Fruit

Juice & Milk

Grab 'n' Go

Fruit Smoothie
New this year!

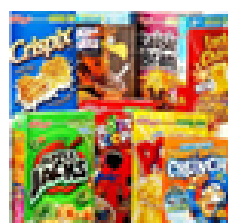


Breakfast is available every day to every student!
No need to sign up!

You may choose:

Breakfast entree or Up to 2 cereals and 2 servings of fruit and breads

And milk



Fillmore Central School

104 Main St.
PO Box 177
Fillmore, NY 14735

Phone: 585-567-4432

Fax: 585-567-4558

E-mail: wbutler@fillmorecsd.org

Enter to Learn; Go Forth to Serve.



Please remember to send a note or call the school **before 1:00 p.m.** if your child/ children will have a change for the end of the school day.



Important Reminders

Excuses

Please remember to send in excuses whenever your child is absent, is late, or is leaving school early. Please remember to write your child's full name on excuses.

Agenda/ Book Bag

It is important for families to check each child's agenda and/or book bag for notes every day. Teachers use these tools to communicate upcoming events and any changes to a child's normal routine. Thanks for your help!